

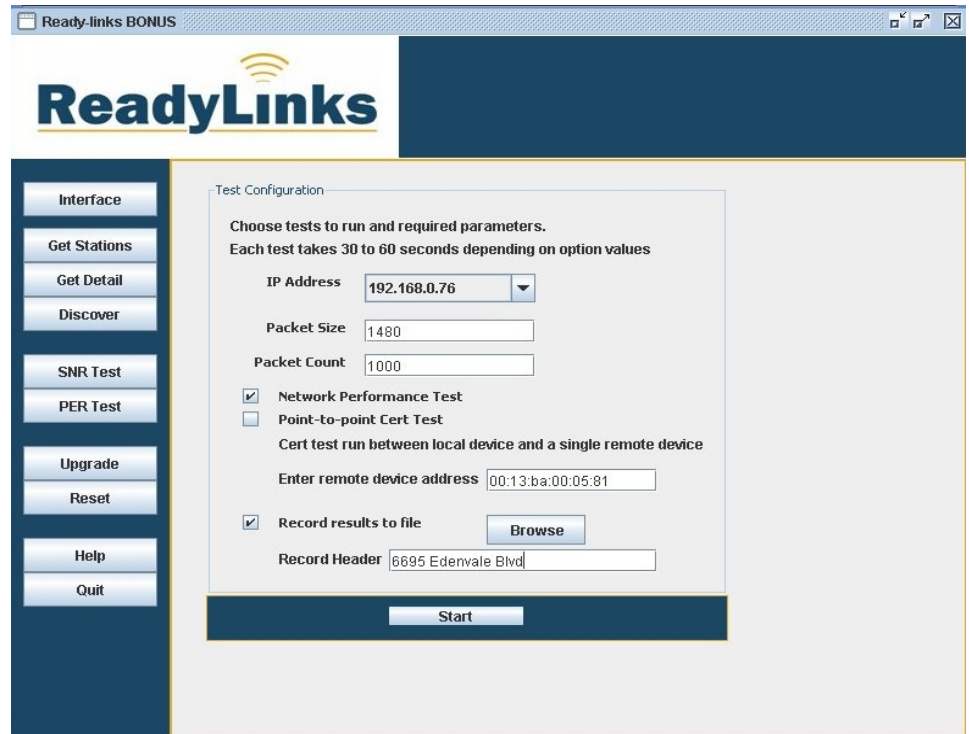
Applications:

- Managing HPNA in-home networks for Triple-Play
- Manage ITU G.9954 Enterprise networks
- IP Video Security
- Building Automation
- Perimeter Security
- Transportation Systems
- IP Factory Floor

Key Highlights:

- Easy Installation on PC
- Quick connection to HPNA device Ethernet Port
- Network Discovery
- Signal to Noise Ratio Testing
- Packet Error Rate Testing
- Transmit and Receive power level testing
- Store test results in log file

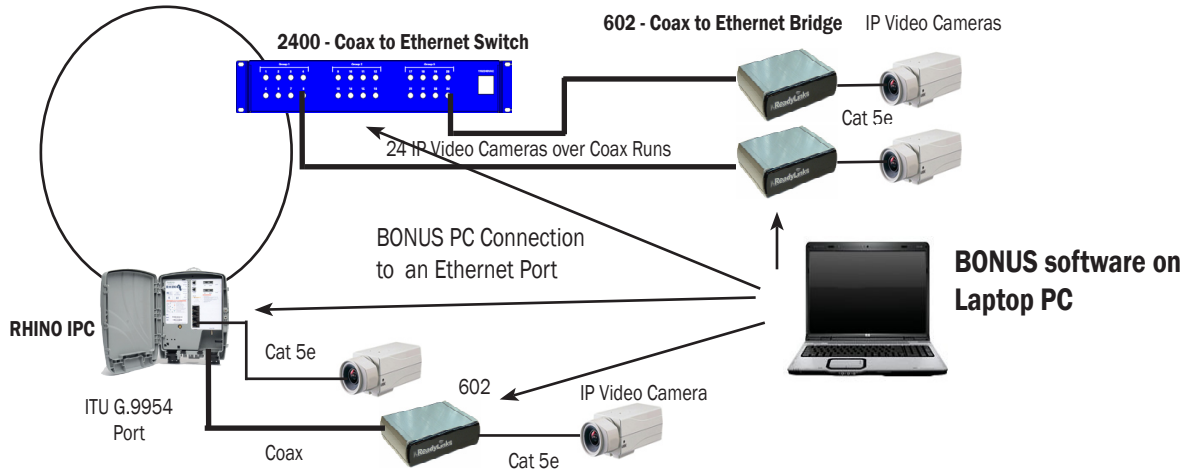
BONUS provides network administrators and technicians a powerful means of interrogating and testing HPNA and G.9954 devices. This PC-based software package connects to RHINOs and IPcoax devices via an Ethernet port. The BONUS graphical user interface is easy to use and the testing methods are intuitive.



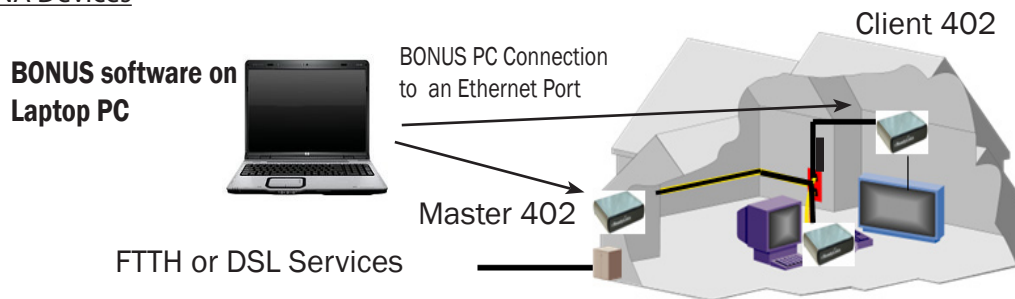
Bonus Features

- Network Discovery - BONUS finds all HPNA/G.9954 devices connected to the device under test and displays settings and capabilities
- Retrieve details of devices such as software version
- Upgrade firmware in Readylinks IPcoax units such as 402, 602 and SEB
- Signal to Noise Ratio testing and reporting for all connections
- Point to Point Certification testing with detailed performance reporting
- Packet Error Rate testing and reporting
- Transmit and Receive power level reporting
- Real-time testing data over a user defined interval
- Reset HPNA/G.9954 devices remotely
- Store log reports for retrieval later

BONUS with ITU G.9954 Devices



BONUS with HomePNA Devices



BONUS Software Download Process

- BONUS software is downloaded from www.ready-links.com. The link is on the BONUS web page
- WinPcap drivers are required for proper operation and are available at www.winpcap.org
- Follow on-screen instructions for installation and program initiation.

Specifications	
Environmental Specifications	
PC and Operating System	PC (no Mac) Windows 2000 or XP
Required Software Drivers	WinPcap downloadable from www.winpcap.org , requires Java run-time environment (should already be running due to Web browser needs)
Program size	6 Megabytes
Ethernet Port Connectivity	
PC Ethernet Port	1 (one) 10/100 Ethernet RJ-45 port
HPNA 3 or ITU G.9954 Ethernet port	1 (one) 10/100 Ethernet port on Device Under Test: <ul style="list-style-type: none"> • Primary or Secondary Ethernet port on 402 • Primary or Secondary Ethernet port on 602. • Test SEB using connection to HPNA Master • Connect to IPcoax 2400 Admin Ethernet port • Connect to RHINO Ethernet Port 4

Note: specifications are subject to change. v1.1