

## Applications

- Ethernet Services Delivered over Coax or Phone Wiring
- Multidwelling Units
- Apartments
- Condos and Townhomes
- Long-term Care Facilities
- Schools
- Video Surveillance
- Hotels
- Hospitals

## Key Highlights

- Open Standards Based
- Fast Installation
- Advance Data Security Features
- Compatible with RF CATV Video
- Extensive VLAN capabilities
- Flexible Direct, Ring or Daisy Chain WAN Architecture
- Line Card Upgradability

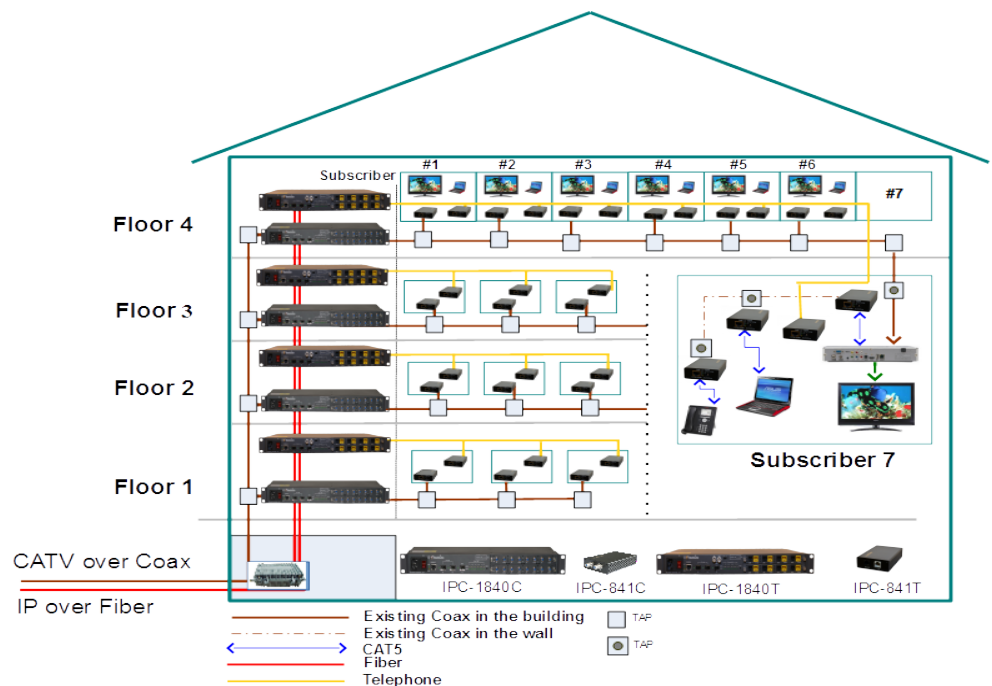


IPC-1840C Coax



IPC-1840T Twisted Pair/Phone

- Best performance G.hn over coax or phone line
- More than 4x the data rate of legacy technology
- Best noise robustness and Block Error Rate
- Ensured communications even under adverse conditions
- Unprecedented reliability of data delivery
- Rugged 1 U metal chassis with active cooling



Typical Installation

## Product Family



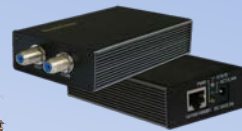
IPC-1840 (coax or phone)



CLC-1840C (Coax)



CLC-1840T (Phone)



IPC-841C (Coax)



IPC-841T (Phone)

### Rapid Provisioning and Multiple Management Options

- Easy Plug and Play Installation to connect fiber optic and coax cables
- Remote management of IPcoax™ 1840 and attached clients in the dwelling units reduces maintenance calls
- ReadyLinks ReadyView™ Graphical User Interface shows status of all IPcoax™ 1840 and clients in the network along with network performance statistics such as Tx and Rx speeds



## Specification

Operating Temperature, Storage Temperature	0 to 40° C, -10° C to 65° C	
Input Voltage and Power Consumption	110-240 Volts AC (50-60 Hz) < 75 watts	
Certifications	UL, CE, CUL, FCC Part 15 Class B, EMC 89/336/EEC, ICES-003	
Coax wire Phone wire	Eight (8) data +RF & eight (8) RF interface connectors F connector, RG-6 or RG-59, 50 ohm Standard POTS or twisted pair	
Ethernet Interface WAN/LAN Connectivity	Two (2) SFP sockets supporting 1Gbps symmetrical fiber or copper Ethernet ring, daisy chain or direct connect.	
Serial Interface for Administration	RS 232 console port	
WAN Protocols	MSTP, RSTP	
Standards Compliance	IEEE802.3, IEEE802.3u, IEEE802.x, IEEE802.1D, IEEE802.1Q VLAN ID, ITU-T G.9954	
VLAN Tagging	Fully manage both client and master port VLAN tagging and trunking	
Dimensions, Weight	12"(L) x 19"(W) x 1.75"(H), (301mm x 408mm x 44mm), 9 lbs..	
Management	CLI, Web, SNMP	
Configuration	Automatic remote server configuration file	
Maximum clients	64 (Two (2) Coax or Phone Line Cards per chassis)	
	<b>IPC-1840C (Coax)</b>	<b>IPC-1840T (Phone)</b>
Data Rate Physical Layer	1,024 Mbps	1,024 Mbps
Data Rate Effective	700 Mbps	600 Mbps
Coax Distance @ Full Data Rate	3,190 ft (RG-59), 4,000 ft (RG-6)	1,000 ft (twisted pair)
Max Loss @ Full Data Rate	60 dB (5 – 100 Mhz)	30 dB (5 – 100 Mhz)
Max Number of Clients	64 per chassis, 32 per card, 8 per port	64 per chassis, 32 per card, 8 per port
Modulation Type	Fast Fourier Transform (FFT) Orthogonal Frequency-	Fast Fourier Transform (FFT) Orthogonal Frequency-
Robustness	LDPC, FEC line condition adaptive	LDPC, FEC line condition adaptive
Compatibility	Passive CATV and VOD systems	Plain Old Telephone System (POTS)
Ordering part numbers:	IPC-1840C (Master Switch) IPC-841C (Client) CLC-1840C (Chassis Line Card)	IPC-1840T (Master Switch) IPC-841T (Client) CLC-1840T (Chassis Line Card)