

Applications

- Ethernet Triple Play Services Delivered over Coax or Phone Wiring
- Multidwelling Units
- Residential
- Apartments
- Condos and Townhomes
- Long-term Care Facilities
- Hotels
- Casinos
- Video Surveillance
- Schools
- Hospitals

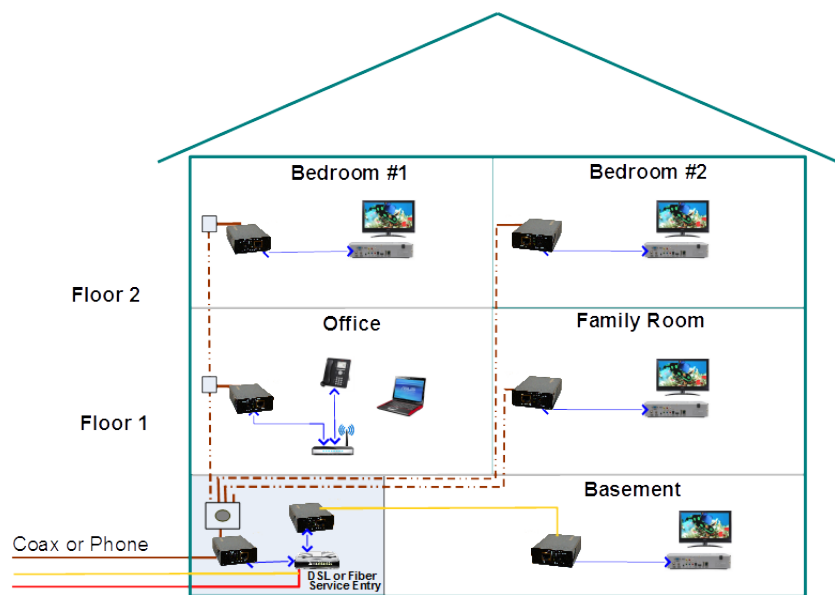
Key Highlights

- Open Standards Based
- Fast Installation
- Advance Data Security Features
- Compatible with RF CATV Video
- Extensive VLAN capabilities

1 Gbps over coax or phone cable



- Best performance over coax or phone line
- More than 4x the data rate of legacy technology
- Best noise robustness and Block Error Rate
- Ensured communications even under worst noise scenario
- Unprecedented reliability of data delivery
- Rugged extruded metal chassis



Typical Residential Installation

Product Family



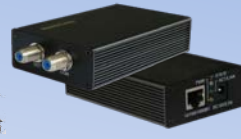
IPC-1840 (coax or phone)



CLC-1840G (Coax)



CLC-1840T (Phone)



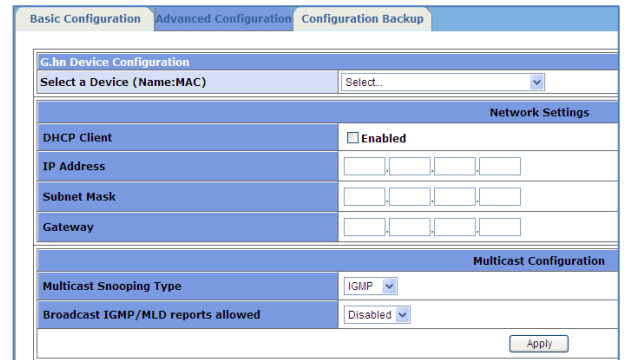
IPC-841C (Coax)



CEB-841T (Phone)

Rapid One Step Provisioning, Multiple Management Options

- Easy Plug and Play Installation to connect fiber optic and coax cables
- Remote management of IPcoax™ 1840 and attached clients in the dwelling units reduces maintenance calls
- ReadyLinks ReadyView graphical User Interface shows status of all IPcoax™ 1840 and clients in the coax network and shows network performance statistics such as Tx and Rx speed.



Specification

Operating Temperature, Storage Temperature	0 to 40° C, -10° C to 65° C	
Input Voltage, Power Consumption	5VDC @ 1 A, AC transformer 100-240V (50-60 Hz)	
Certifications	UL, CE, CUL, FCC Part 15 Class B, EMC 89/336/EEC, ICES-003	
Data(Com) and TV Port	F connector, RG-6 or RG-59, 50 ohm	
Ethernet Interface	RJ45 connector, 10/100/1000 with VLAN tagging	
Quality of Service	Negotiated QoS flow parameters between devices at the endpoints of a flow in order to establish buffering and channel (BER/PER) constraints. Contract between flow source device and Master constrains bandwidth, latency and jitter. Traffic classification - management, voice video and data	
Standards Compliance	IEEE802.3, IEEE802.3u, IEEE802.x, IEEE802.1D, IEEE802.1Q VLAN ID, ITU-T G.9954	
Power	3 Watts, 5VDC	
Dimensions, Weight	4"(L) x 2.5"(W) x 1."(H), (101.6mm x 63.5mm x 25.4mm), less than 0.5 lbs.	
	Coax	Phone
Data Rate Physical Layer	1,024 Mbps	1,024 Mbps
Data Rate Effective	600 Mbps	500 Mbps
Cable Distance @ Full Data Rate	3,190 ft (RG-59), 4,000 ft (RG-6)	500
Max Coax Loss @ Full Data Rate	60 dB (5 - 100 Mhz)	30 dB (3.5Ghz)
Max Number of Clients	8 per node	1 per node
Modulation Type	Fast Fourier Transform (FFT) Orthogonal Frequency-	Fast Fourier Transform (FFT) Orthogonal Frequency
Robustness	LDPC, FEC line condition adaptive	LDPC, FEC line condition adaptive
Compatibility	Passive CATV (Ch 2-130), VOD systems	Plain Old Telephone System (POTS)