



## Extraordinary Network Management System



## Monitor

- Manage on any device
- Android platforms
- Tablet, laptops, phones, etc.

**ReadyView**



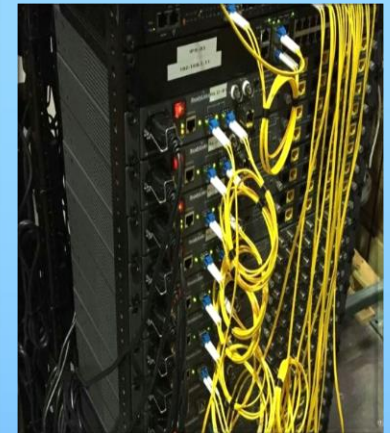
## ReadyView

- Secure network monitoring system
- Cloud based
- Real-time reporting
- Event logs



## Bridge

- Stand alone
- Windows client
- Linux client



## Network

- Switches
- Set top boxes
- Client modems
- SNMP
- Services

**Secure Tunnel**

# ReadyView™ NMS/EMS Solution – Home

Home

Jun 4 2015 12:59 CDT

Search Info Status Reports Dashboards Maps admin

### Availability Over the Past 24 Hours

| Categories                   | Outages        | Availability        |
|------------------------------|----------------|---------------------|
| Network Interfaces           | 66 of 79       | 2.290%              |
| Web Servers                  | 85 of 91       | 0.797%              |
| Email Servers                | 0 of 0         | 100.000%            |
| DNS and DHCP Servers         | 43 of 44       | 0.267%              |
| Database Servers             | 0 of 0         | 100.000%            |
| JMX Servers                  | 0 of 0         | 100.000%            |
| Other Servers                | 45 of 48       | 0.942%              |
| <b>Total</b>                 | <b>Outages</b> | <b>Availability</b> |
| Overall Service Availability | 239 of 262     | 1.102%              |

### Nodes with Outages

- ReadyLinks IPC-1840 (1 hour)
- 192.168.0.50 (2 hours)
- 192.168.0.15 (14 hours)
- 192.168.0.56 (2 days)
- MOM-PC (5 days)
- ReadyLinks IPC-1840 (5 days)
- 192.168.0.60 (1 week)
- 192.168.0.68 (1 week)
- 192.168.0.67 (1 week)
- Occam (1 week)
- Occam (1 week)

7 more nodes with outages...

### Notifications

- You have 170 outstanding notices
- There are 194 outstanding notices
- On-Call Schedule

### Resource Graphs

Search

### KSC Reports

No KSC reports defined

Search

### Quick Search

Node ID:  Search

Node label like:  Search

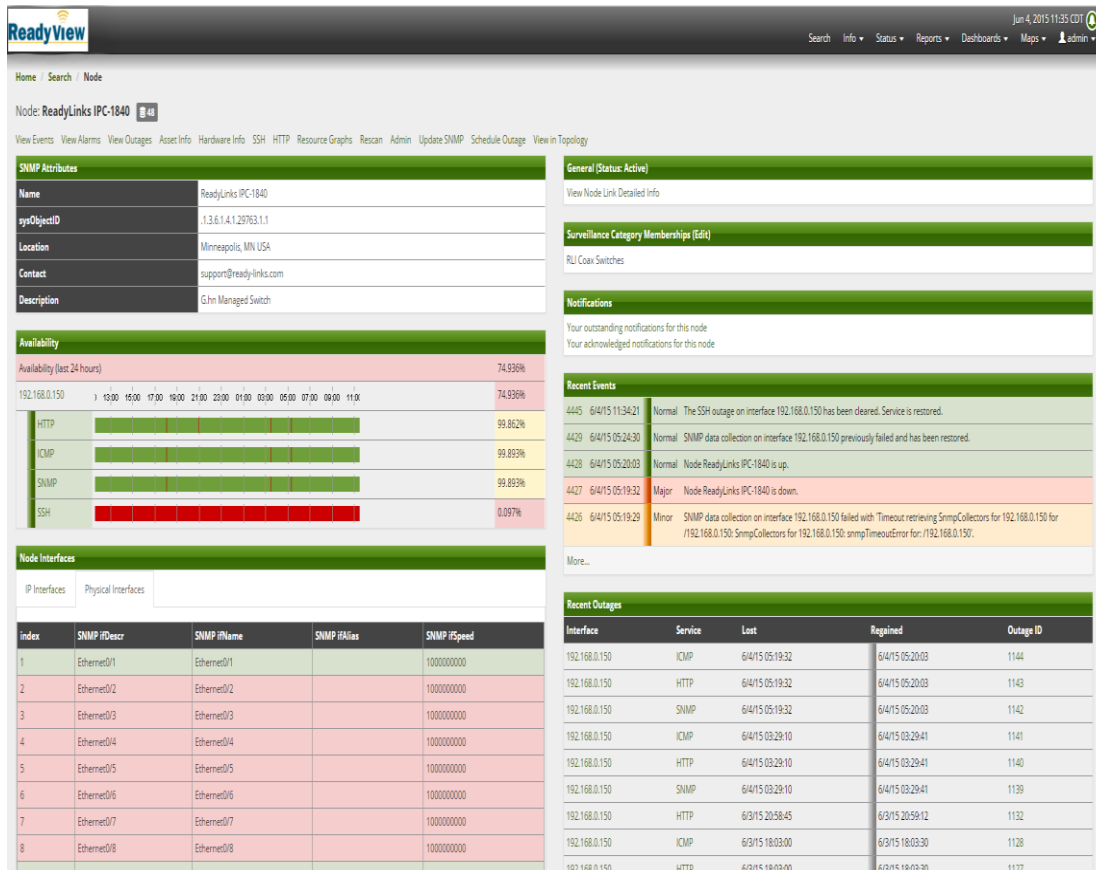
TCP/IP Address like:  Search

Providing service: DNS  Search

- Centralized management system for network devices – STB, switches and modems
- Open standard XML, SNMP messaging supports integration into third party OSS
- WEB style based management
- Secure User management
- Auto device discovery
- Fault/Alarm Management
- Configuration/Provisioning Management

*ReadyView™: Your Network View Brought to You*

# ReadyView™ NMS/EMS Solution – Node



- Quickly resolve issues with specific units by viewing current and past events on a single page
- Monitors and tracks issues based on specific service, IP interface and physical hardware interface
- Records and logs general notification, recent events and outages
- Organize devices into specific surveillance groups for easier monitoring and trouble shooting

*ReadyView™: Your Network View Brought to You*

